

CONTENTS

PROFESSIONAL PHOTOGRAPHER SEPTEMBER 2010



Features

110 IN LIVING COLOR

Tim Schooler builds a successful senior portrait business

By Jeff Kent

118 ISN'T SHE LOVELY

Thayer Allyson Gowdy loves photography, weddings and the good life

By Lorna Gentry

94

WEDDINGS: LOVE & PHOTOS

Mi Belle's continual evolution in the world of weddings

By Jeff Kent

100

WEDDINGS: STAR POWER

Web wunderkind Jasmine Star and her Facebook magic

By Stephanie Boozer

106

WEDDINGS: OH, BEHAVE!

Acting the part of a pro when shooting a wedding or ceremony

By Jeff Kent

IMAGE BY JASMINE STAR

78 SPECIAL SECTION: WORKFLOW

WORKFLOW POLISH

Does your workflow work well? Could it be better?

SHOOTING WITH INTENT

Learning to simply shoot less

TUTORIAL: EFFICIENT RETOUCHING

BOOK: MAKING IDEAS HAPPEN

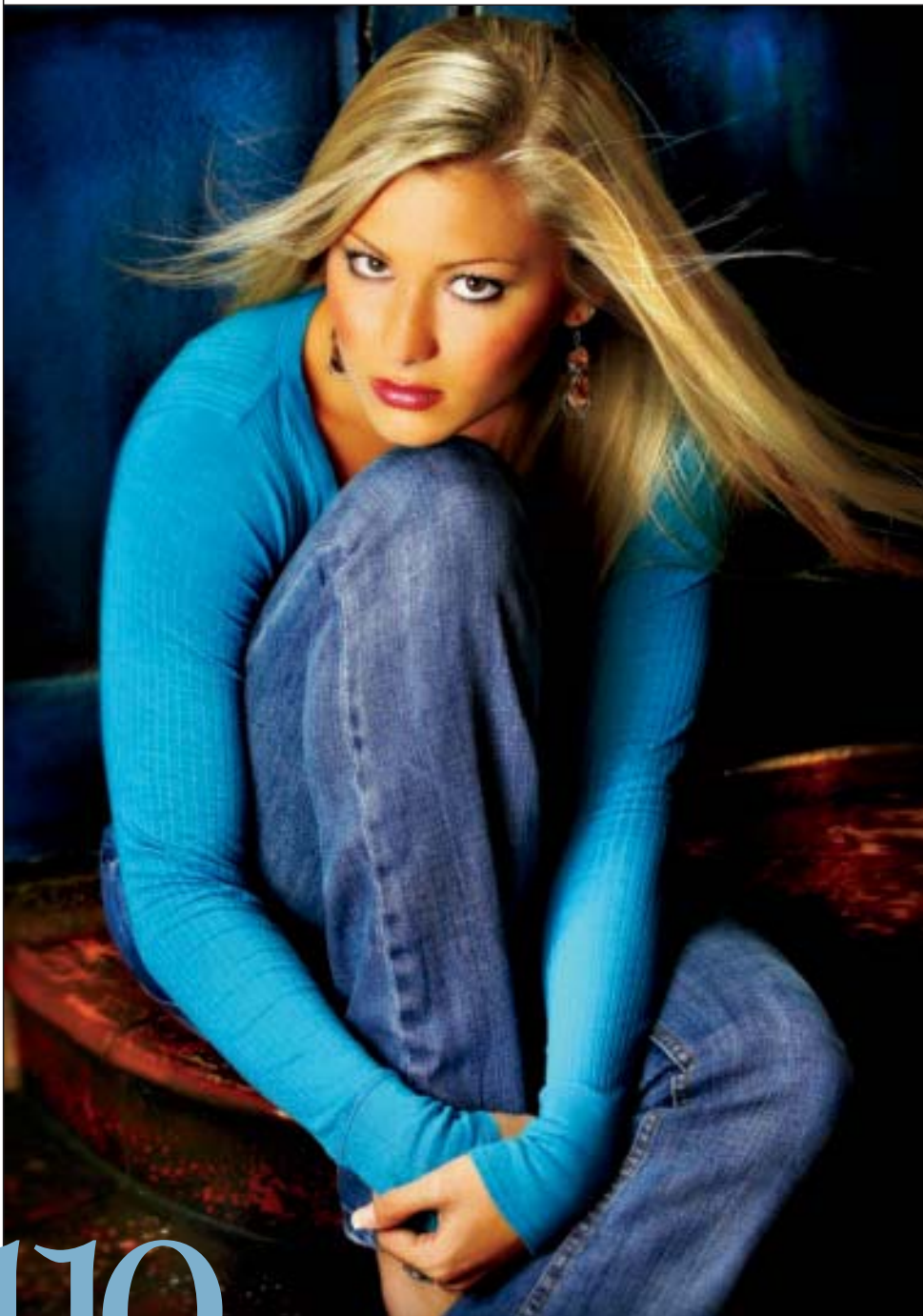
Author Scott Belsky helps you turn vision into reality

TUTORIAL: AUTOMATE THE DETAILS

CONTENTS

PROFESSIONAL PHOTOGRAPHER | SEPTEMBER 2010 | WWW.PPMAG.COM

©Tim Schooler



110

Tim Schooler's camera room psychology—which actually begins in the pre-session consult—works wonders with his high school senior clients. They trust him and feel comfortable enough to be themselves. "The more comfortable they are, the better the images," he says.

- 14 FOLIO
- 61 IMAGING USA
- 131 PPA TODAY
- 146 GOOD WORKS

Departments

CONTACT SHEET

- 18 Sandro: Soul Man
- 24 PPA lobbies for small business tax relief
- 28 Sharon Montrose: Say *woof!*
- 30 Be Stronger contest winner Phil Merutka gets a business makeover

PROFIT CENTER

- 33 What I think: Dina Douglass
- 36 Ask the experts
- 38 What the Patient Protection and Affordable Care Act means for you

THE GOODS

- 45 What I like: Josh & Michelle Beller
- 46 Video 101
by Lindsay Adler
- 48 Data wrapping
by Robyn L. Pollman
- 52 Pro review: PocketWizard ControlTL
by Ellis Vener
- 56 Pro review: Kodak Professional Ektar 100

ON THE COVER: Photographer Thayer Allyson Gowdy captured our cover image for *Modern Bride* magazine. On location at the Parker Hotel in Palm Springs, Gowdy used natural light, reflective boards, fill light, and silk scrims to soften and control the light. She captured the image with a Hasselblad H2 medium-format camera and Phase One P30+ digital back. Model: Kyla Love at Ford Models.

Cover image retouched by Jim DiVitale, M.Photog.ME!Cr., API, F-ASP